

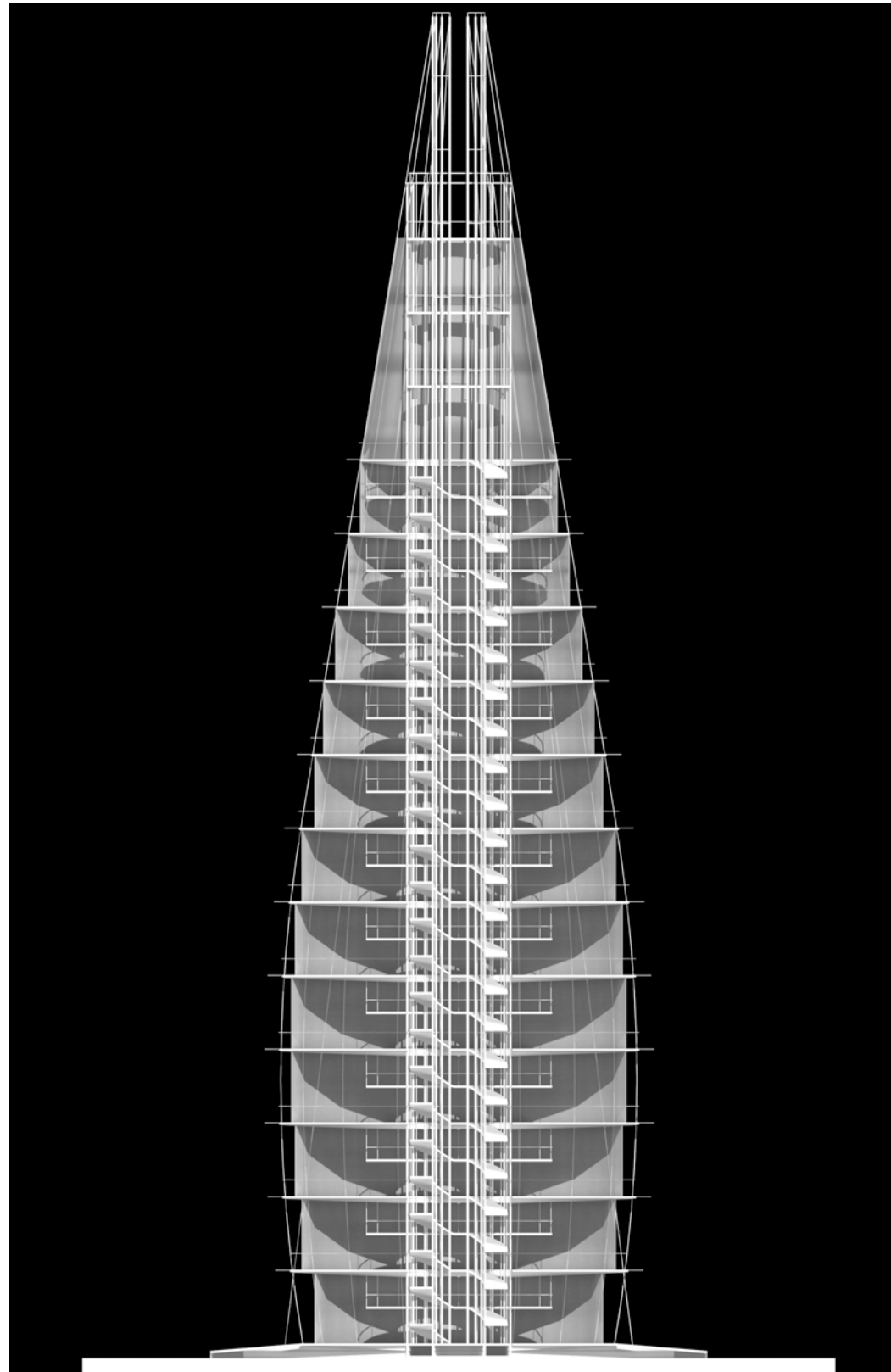
Amalgam Studio “The Beacon”, New York City, NY, USA

April 2010 – Present

Pop-up Skyscraper A theoretical concept design for a rapidly deployed radical skyscraper design

Architect/Vision:

- Amalgam Studio is proposing a visionary, uplifting development to help house over 750 New York City’s homeless on a vacant disused lot at Canal and Varick streets in Manhattan’s Hudson Square Neighborhood.
- The structure(s) envisioned are designed with integrated, multi-purpose, holistic, humanistic, systems thinking, following best practices of sustainability and permaculture principles.
- The rapidly constructed, self-powered, and self-sustaining building(s) will provide not only housing, but medical facilities, administration offices, communal spaces, and academic and manual learning centers for residents.
- Essentially the aim is to grow a new, self-reliant, self-perpetuating community that removes chronic homeless from the streets, providing housing, rehabilitation, for individual and families in the exchange for sweat equity in the manufacturing of the very building parts that will be used in the construction of the next Beacon project 'off-shoot' development.
- The design is re-usable, replicable, light-weight, rapidly constructed, self-erecting, multi-functional, column-free, adaptable, with open planning interiors.
- Using hi-tech materials and hi-tech design integration, with low-tech Construction methodology, and low-tech Passive heating and cooling strategies, it uses comprehensive, integrated, holistic, and permaculture design principles to produce a beautiful, sculptural, inspirational pinnacle of high-rise design.
- Entered into the International Evolo Skyscraper Competition 2018



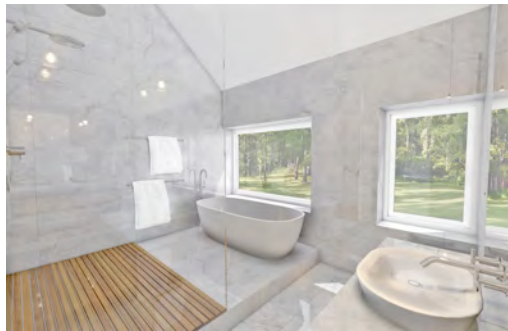
Amalgam Studio “Modern Farmhouse”, Rhinebeck, Dutchess County, NY, USA

Apr 2019 – Present

Residential Exterior & Interiors The overall gable form and material selection for this 3 Bedroom Single Family Residence were inspired by local rural farmhouse archetypes

Building Designer/Developer/Architect:

- A 3 Bedroom, 3 bathroom, “To Be Built” Single Family Residence celebrating country living with a clean-lined modern farmhouse aesthetic with attached 2 car garage with loft space/studio over. With rooftop photovoltaic solar panels the house can be self-sufficient and off-grid. It is to be located on a hillside on a 5 acre property on a quiet cul-de-sac development called Crimson Hill in highly desirable Rhinebeck in Dutchess County New York State.



Amalgam Studio “Modern Stonehouse”, Rhinebeck, Dutchess County, NY, USA

Apr 2019 – Present

Residential Exterior & Interiors The overall gable form and material selection for this 3 Bedroom Single Family Residence were inspired by local historic farmhouse archetypes

Building Designer/Developer/Architect:

- A 3 Bedroom, 3 bathroom, “To Be Built” Single Family Residence with attached 2 car garage with loft space/studio over. With rooftop photovoltaic solar panels the house can be self-sufficient and off-grid. It is to be located on a hillside overlooking a pond on a beautiful, quiet, pristine 17 acre property in highly desirable Rhinebeck in Dutchess County New York State.



Amalgam Studio “Silvernails”, Columbia County, NY, USA

April 2016 – Nov 2018

Residential Exterior The overall form, materials, layout and construction methodology of this 3 Level 5 bedroom Single Family Residence were inspired by local historic barn archetypes

Building Designer/Architect:

- Award-winning Main House and Carriage-house design included triple glazing throughout, treated wood to decking, tilt-up sunshading devices, wall cladding and rainscreen roof.



Amalgam Studio “Silvernails”, Columbia County, NY, USA

Sep 2017 – Nov 2018

Residential Interiors Interior Design for this 5 bedroom Residence included a natural material palette, an emphasis on natural sunlight, and a clean modern rural aesthetic

Interior Designer/Architect:

- Custom-Designed and documented all Built-in Casework and Cabinetry
- Lighting Design
- Loose Furniture Selection



Amalgam Studio “Mas (Farmhouse)”, West Village, New York City, NY, USA

Dec 2016 – Jun 2017

Hospitality Interiors James Beard Award-winning & Michelin Rated Chef's Restaurant Interiors Renovation in the historic West Village of Manhattan

Co Interior Designer:

- Amalgam Studio with Isabella Patrick Design created a warm, welcoming and elegant dining experience
- Amalgam Studio designed the custom wallpaper for the bathrooms
- Co-ordinated lighting design
- Designed, detailed and documented all new custom built-in cabinetry and bar countertops
- Completed commissioned hand-drawn translucent back-lit illustrations for rear dining room



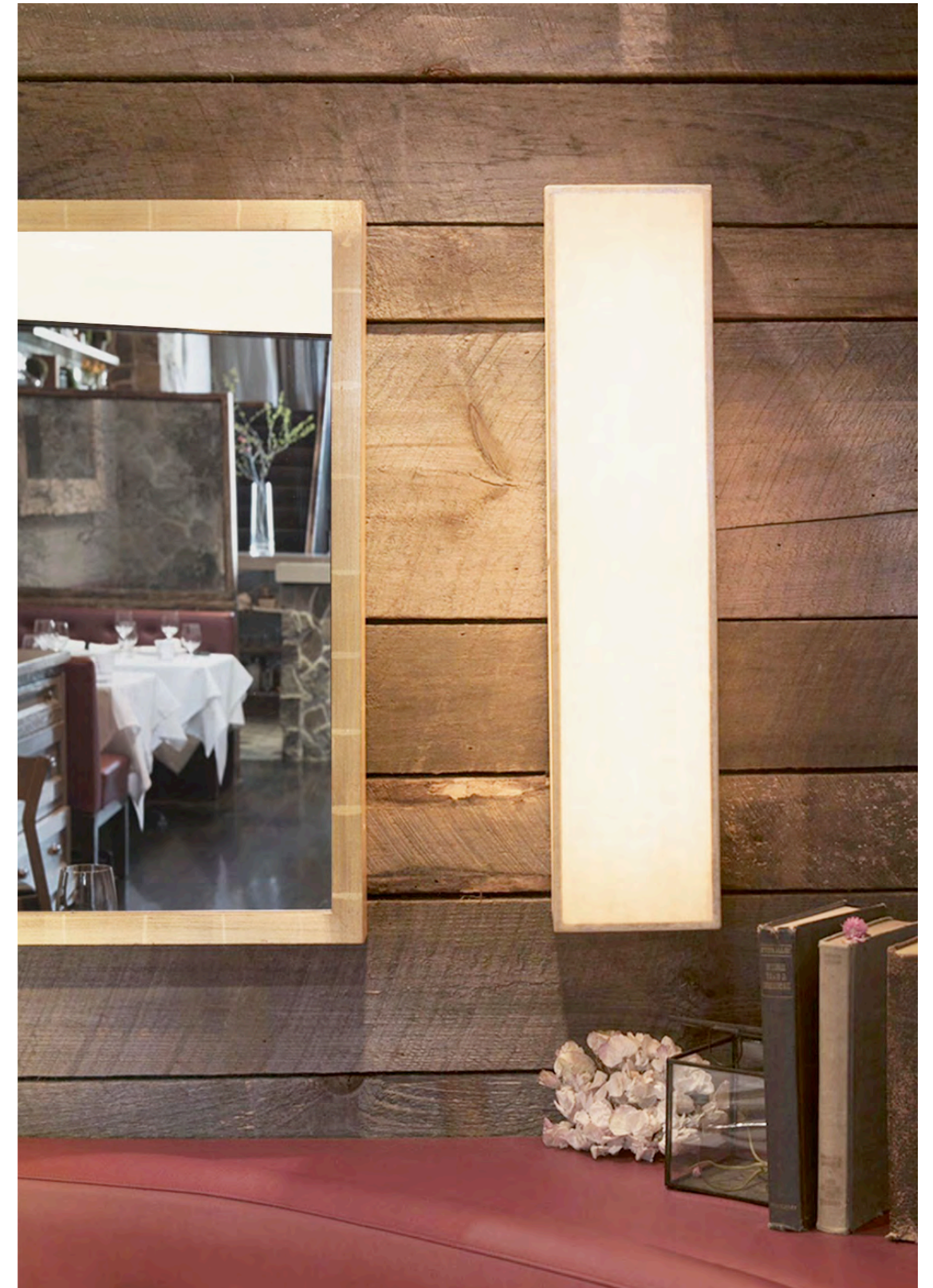
Amalgam Studio “Almanac”, West Village, New York City, NY, USA

Aug 2014 – Nov 2014

Hospitality Interiors James Beard Award-winning & Michelin Rated Chef's Restaurant Interiors Renovation in the historic West Village of Manhattan

Co Interior Designer:

- Amalgam Studio with Isabella Patrick Design created a warm, welcoming and elegant dining experience
- Amalgam Studio designed the custom wallpaper
- Co-ordinated lighting design
- Designed, detailed and documented custom built-in cabinetry and bar casework
- Completed commissioned food theme-based framed hand-drawn illustrations



Amalgam Studio 359 Broadway, New York City, NY, USA

July 2015 – Sept 2015

Commercial Façade & Interiors A ground floor lobby renovation design and retail façade redesign in concept design phase for the public entrance of a Landmarked Building in the Cast-Iron District of Tribeca

Lead Designer:

- A re-imagining of a tight, dark, gloomy, slightly scary existing public lobby space into one of light, lightness, simplicity and restrained elegance



Thom Filicia Inc. “Mayakoba” Rosewood Residences, Mexico

Residential Interiors 33 Individual Multi-storied High-End Residential Villas on 4 islands, comprised of 5 different prototypes

April 2014 – Nov 2015

Total Estimated GFA 20,000m²

Interior Architect:

- Team leader through DD & CD phase
- In charge of Interiors Documentation Drawing Set
- Documented all Interior Elevations showing outlet, switch, wall sconces, plumbing & pendant lighting locations
- Documented door schedule, material schedule & detail legend
- Documented all built-in cabinetry and millwork including all bathroom vanity units and integrated kitchen cupboards
- Liaised closely with local architects GVI to ensure code compliance & design integration
- Client meetings & presentations
- Oversaw selection of all exterior and interior loose furniture, finishes, lighting, window treatment, plumbing fixtures and appliances
- Reviewed local architects GVI proposals, designs, & materials to ensure design and intent correlate between exteriors and interiors



Thom Filicia Inc. “Mayakoba” Rosewood Residences, Mexico

April 2014 – Nov 2015

Residential Interiors 33 Individual Multi-storied High-End Residential Villas on 4 islands, comprised of 5 different prototypes

Total Estimated GFA 20,000m²



Office of Design & Architecture “Harlem Park” 1800 Park Avenue, Harlem, New York City, NY, USA

Jul 2013 – Dec 2013

\$250m Residential Rental Highrise Two Phased 33 Level Tower, 1 level Basement Carparking & Retail Tenancy, Ground Level Retail, 2nd level Retail Tenancies, 3rd Level Amenities

Total GFA 56,000m²

Project Architect:

- Team leader through Concept Design Phase as Design Architects
- Client liaison; with weekly meetings with client, Retail consultants & Residential consultants
- Point of Contact for all consultants including Structural, MEP, SLCE (Architect of Record) & Cost Estimators
- In charge of the drawing set & oversaw the development of design and client Presentations
- Responsible for the Area Calculations
- Worked with SLCE to develop and co-ordinate Layout Drawings & Core Design
- Presented to relevant Local Authorities
- Reviewed design to meet Affordable Housing Guidelines, DBA, MTA, ADA, HDC & Metro-North requirements



Kohn Pedersen Fox “Sequis Centre” Sudirman Road, Jakarta, Indonesia

Nov 2011 – Jul 2013

\$200m Office Development 39 Level Office Tower, 5 levels Basement Carparking, 1 level above grade VIP Carparking, Ground Level Retail, 3rd level Tenancies, Public Interior Spaces

Total GFA 65,000m²

Job Captain:

- Team leader through SD & DD phase
- Produced & oversaw SD & DD documentation with close co-ordination of drawings with local architects Wirtaman
- Consultant co-ordination & point of contact for all consultants
- Reviewed Spec & glass samples provided by Facade Consultant
- Responsible for organizing and running ongoing fortnightly VCs with client, Wiratman, Indonesian consultants, landscape designers SWA in LA, the M&E engineers Beca in Auckland, NZ, and security consultants Kroll in HK
- Wrote & Issued meeting minutes
- Attended client & authority presentations
- Confirmed code issues with local architects
- Authored Materials Schedule

Project Manager:

- Client liaison & point of contact
- Handled all project billing, invoices
- Handled all legal & contractual items
- Issued all documents over Newforma
- Suggested, requested & administered Additional Services Contracts
- Reviewed Project billing schedule
- Met with managing partner to allocate staff resourcing
- Suggested, recommended & approved selection of Lighting Designer: Tillotson based in NYC
- Responsible for LEED documentation and ongoing reviews and consultation with LEED consultants Beca

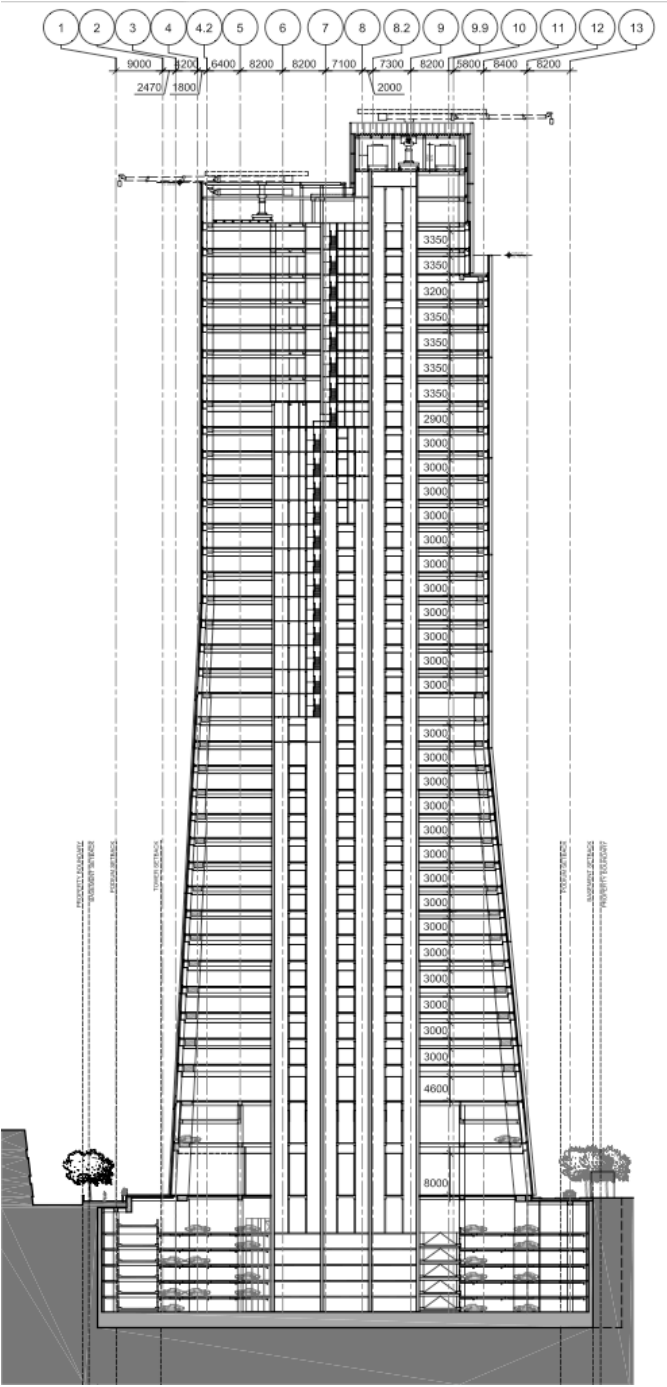


Kohn Pedersen Fox “Sequis Centre” Sudirman Road, Jakarta, Indonesia

Nov 2011 – Jul 2013

Office Interiors Public Interior Spaces including Main Lobby, Parking Lobby, Typical Lift Lobby, Lift Cab Interiors, Bathrooms & Executive Bathrooms

Total GFA 65,000m²



Kohn Pedersen Fox “Forum 66” Qingian Road, Shenhe District, Shenyang, China

Jan 2009 – Jul 2013

\$550m Mixed-Use Development Phase 1 includes 4 level High-End Retail Podium, Basement Retail, 4 levels Basement Carparking, 350m tall Grade A Office Tower & 17 Site Pavilions

Total GFA 861,240m²

Retail Facades Co-ordinator:

- Team leader through DD & CA phase
- Documented roof, roof terraces & façades through DD phase including consultant co-ordination from the façade and M&E engineers
- In charge of Facades Drawing Set
- With local architects and KPF HK office reviewed all façade contractor's shops
- Travelled to Shenyang to review VMU's with façade engineers &
- Authored & issued inspection reports
- Liaised with façade contractor and reviewed all of their shop drawings
- Liaised with client representatives via presentations, site visits & VCs
- Site visits necessary for CA phase & issued inspection reports throughout construction period
- Documented all pavilions located throughout the site, integrating M&E, client & landscape requirements
- Reviewed subsequent façade shops
- Punch-listed all façade types and pavilions on site
- Oversaw the public artworks, selecting art consultants, & approving 2 artists for 2 exterior sculptures
- Reviewed their proposals, designs, materials & shop drawings
- Travelled to Nanjing to inspect & punch-list fabrication of artworks



Kohn Pedersen Fox “Forum 66” Qingian Road, Shenhe District, Shenyang, China

Jan 2009 – Jul 2013

Retail Interiors All major public spaces, including two 4-level high arcades, three atria spaces, basement retail, MTR connection tunnel, scenic lifts, lift cab interiors, lift lobbies & bathrooms

Total Retail GFA 101,960m²

Job Captain:

- Team leader through CA phase, working closely with KPF team in Shenyang and Hong Kong to co-ordinate consultants & manage on-site issues
- Managed and co-ordinated CAD drawings during CD phase between KPF, local architects Wong & Tung, and outsourced documentation firm of A+I
- Reviewed fit-out contractors shop drawings of all paving, storefront setouts, ceilings, balustrade setouts, bathroom layouts, escalator and lift-cab interiors
- Worked closely with senior designers at KPF to select materials, details and quality of finishes
- Reviewed multiple VMU's & issued site inspection reports
- Site visits necessary throughout CA phase & issued inspection reports regularly through construction period.
- Punch-listed all public interiors (not including back of house).
- Participated in Grand Opening!



Kohn Pedersen Fox “Forum 66” Qingian Road, Shenhe District, Shenyang, China

Jan 2009 – Jul 2013

Office Tower Core & Shell 350m Tall Curtain Wall Systems with Grade A Office Interiors including Main Lobby, Typical Lift Lobby, Shuttle Lift Lobby, Lift Cab, and Observation Deck Interiors

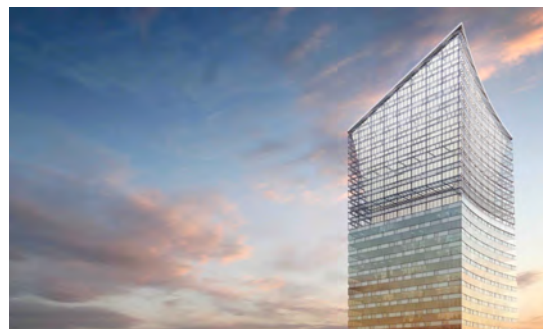
Total Office GFA 191,230m²

Office Tower Exterior Job Captain:

- Team leader through CA phase
- Selected glass & aluminium samples for Typical Curtain Wall
- With local architects and KPF HK Office reviewed façade contractor's shop drawings of CW VMU.
- Travelled to Shenyang to review CW VMU with façade engineers
- Issued VMU inspection reports.
- Reviewed CW PMU in facade contractor's factory in Shenyang
- Punch-listed all façade types onsite
- Worked closely with Lighting Designer to investigate tower CW lighting, LED video screen options, Lantern effects & Lighting Mock-ups for presentations

Office Tower Interior Job Captain & Technical Co-ordinator:

- Team leader through Tender & CA
- Selected, reviewed & approved stone, metal & glass samples.
- Reviewed multiple VMU's, helped develop details & issued site inspection reports.
- Administered client changes and VE requirements to documentation set including specifications.
- Site visits necessary throughout CA



Kohn Pedersen Fox “Riverside 66” Tianjin, China

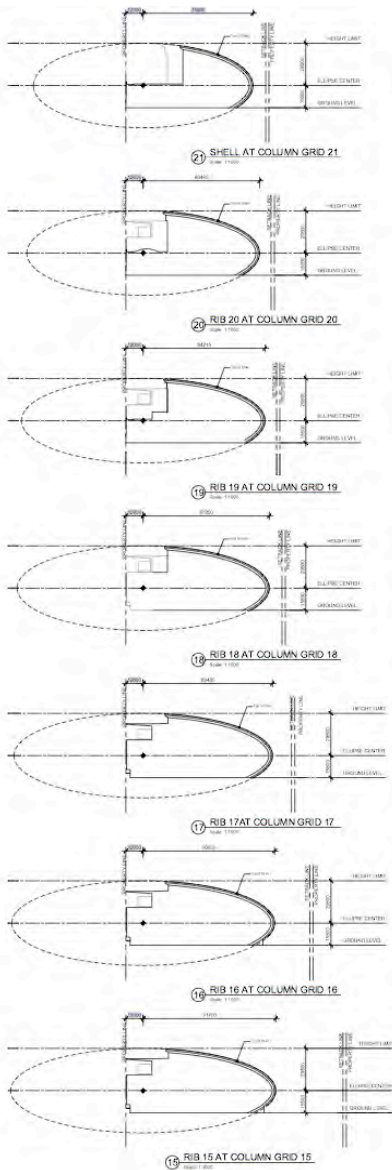
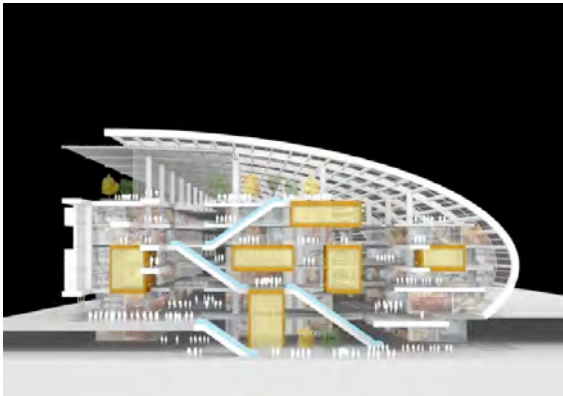
Oct 2008 – Jan 2009

Retail Complex 6 Levels high and 350m long single Retail Building with basement carparking, plaza and entrance pavilions

Total GFA= 251,000m²

Documentation Co-ordinator:

- Team Leader responsible for DD set of documentation for the façade envelope and supporting structure
- Suggested CAD sheet layout, scope, and cross referencing system
- Red-lined the CAD set for team members to update
- Actively worked on and managed the drawing set in ACAD, to ensure a clear, logical & consistent set of drawings describing the design intent & scope of the buildings ‘carapace’
- Provided details & instructions on geometry setout & methodology whilst working with in-house computational geometry experts through DD phase



BURO Architecture & Interiors

“The Plantation” Rainbow Beach, Queensland, AUS

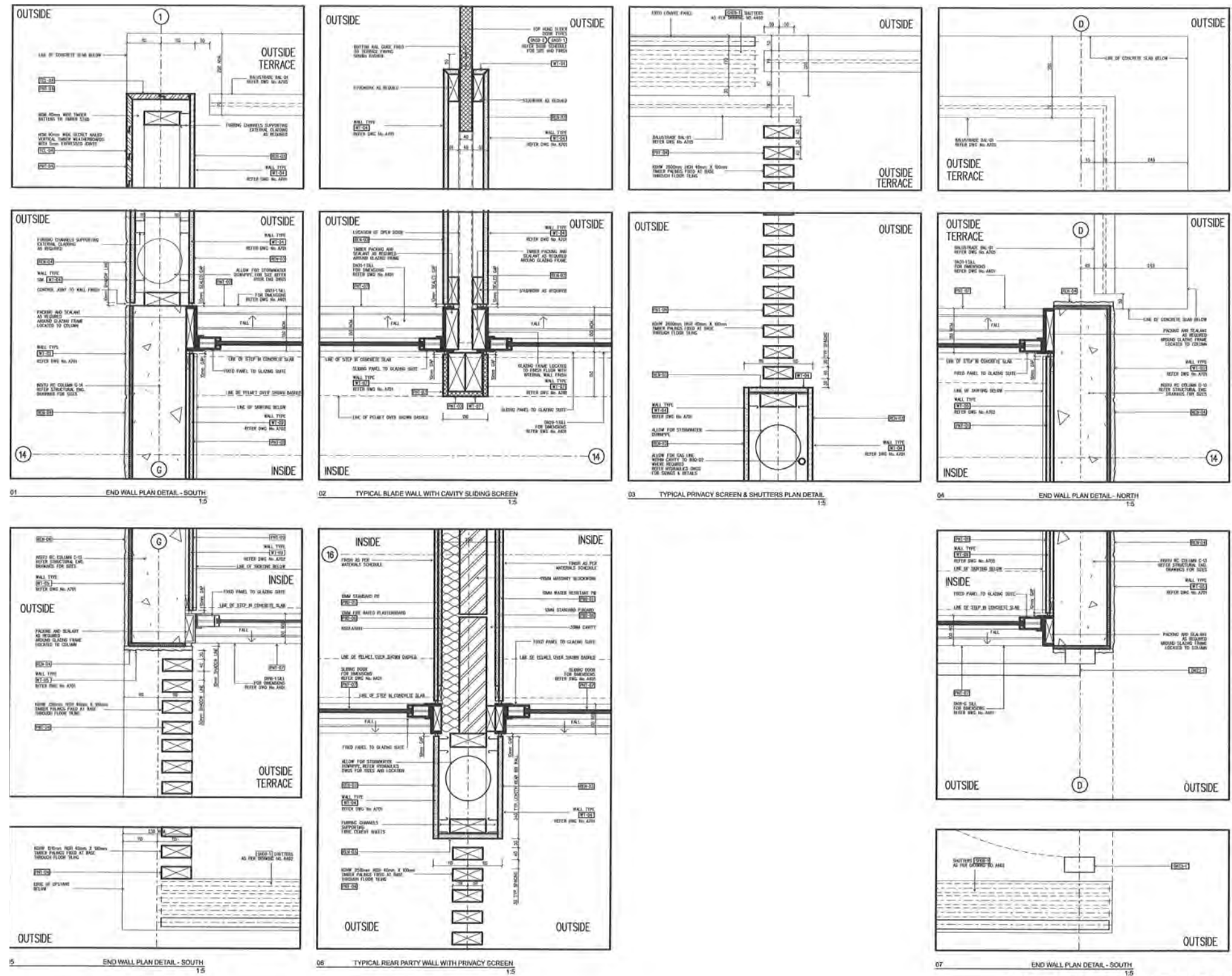
\$25m Mixed Use Resort Development

35 Serviced Apartments & Interiors, 2 Level Pub & Interiors, 10-14 Retail Tenancies, Resort-style Pool, Landscaping & Basement Carpark

Dec 2005 – April 2008

Total Site Area 6,788m²

- Project Architect:**
- Team Leader, producing & overseeing DD & CD documentation for exteriors and interiors of all resort buildings
 - Red-lining of drawing sets
 - Consultant co-ordination
 - Point of Contact for managing contractor, consultants & client
 - Client liaison & client presentations
 - Site visits as required
 - CA phase with local architects
 - All documentation and correspondence with Managing Contractor done through Teambinder
 - Punch-listing
 - Responsible for planning, subdivision, legal, marketing & legal issues



FOR CONSTRUCTION

John Wardle Architects “The Urban Workshop” 50 Lonsdale St, Melbourne, Victoria AUS

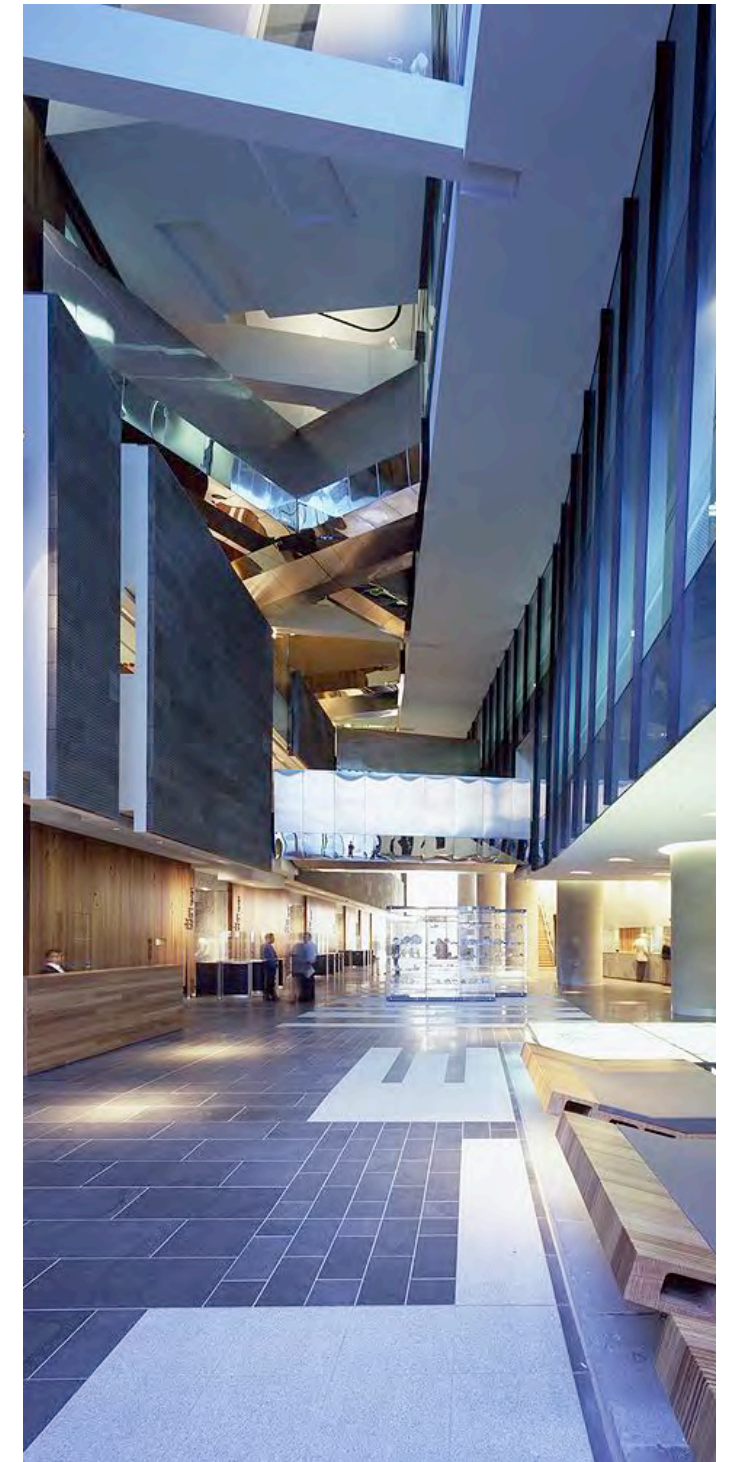
\$200m Commercial Development 34-storey Office Tower, 4-storey Leisure Precinct, Retail Tenancies, & Reinstatement of 4 Heritage Buildings

Dec 2002 – Nov 2005

Total GFA 62,000m²

Podium Façade Co-ordinator:

- Headed & produced DD & CD documentation of all podium facades
- Worked closely with designers to produce detailing accurately reflecting design intent
- Reviewed façade & atria shop drawings of all podium facades
- Worked on site in project office during the one year CA phase to help implement 17 different wall types with façade contractor Permasteelisa
- Worked closely on site with Managing Contractor Multiplex to quickly punch-list & provide timely responses
- Attended regular on site meetings
- Liaised with selected Artist Rosslyn Piggot for artworks in Atria space



John Wardle Architects "Centrestage" Northbridge, Perth, Western Australia, AUS

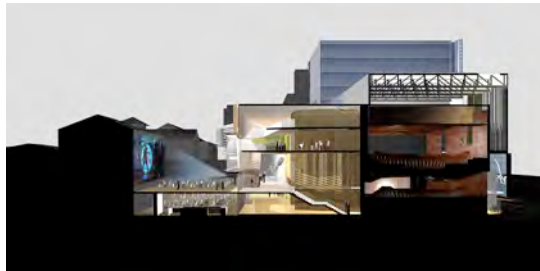
Sep 2005 – Oct 2005

International Competition: Stage 2 Performance Arts Venue of 580 seat Main Theatre & 200 seat Studio Theatre

Total GFA 5,000m²

CAD Co-ordinator:

- Completed analysis complex brief
- Organised spatial planning, connectivity & program heirachy
- Planned seating layout and sectional sight-lines for both theatres
- Engaged in specialist consultant co-ordination, including Acoustic and Theatre Consultant feedback
- Ensured areas met brief requirements
- Completed all CAD drawings used in the presentation boards



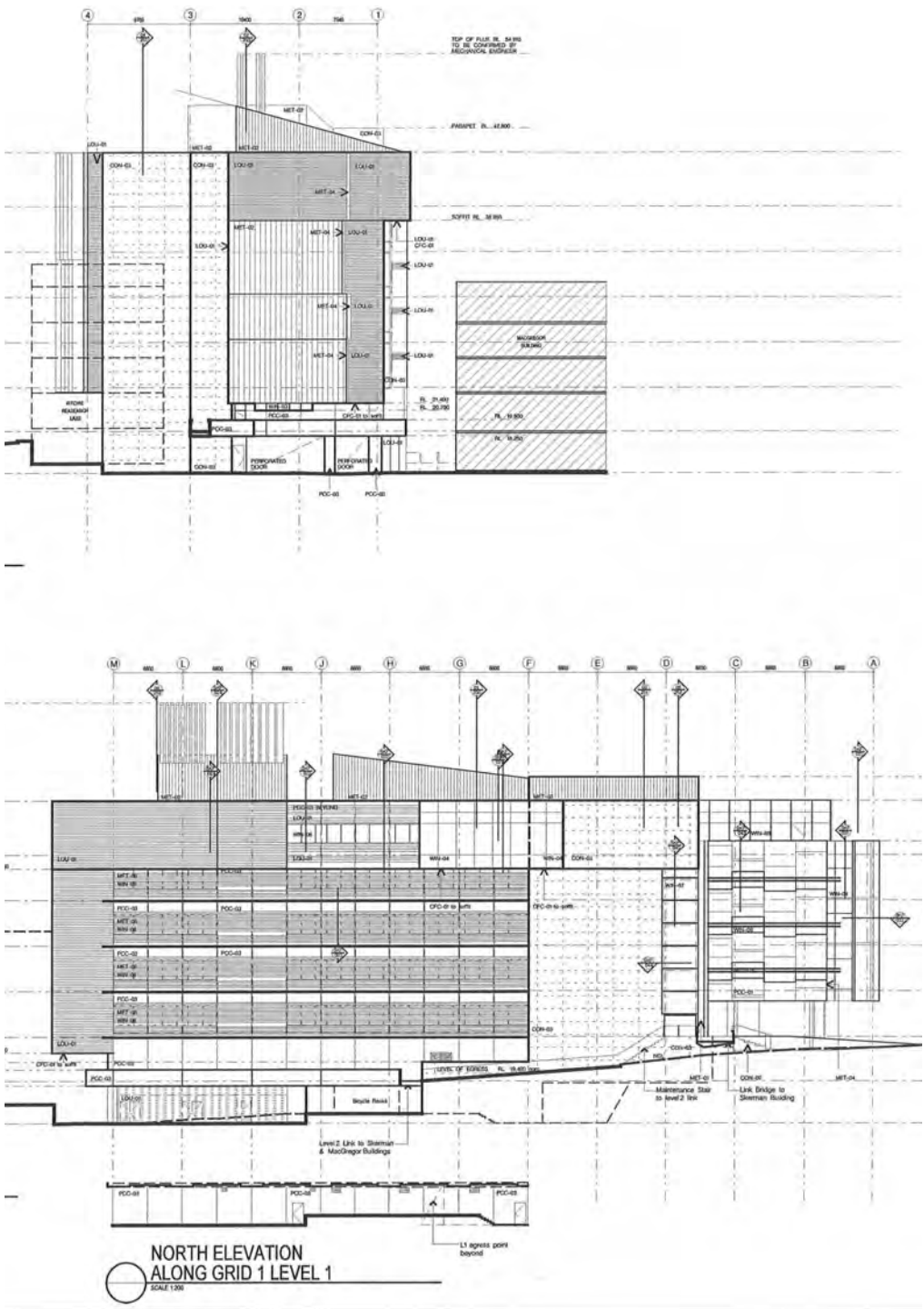
John Wardle Architects Queensland Brain Institute, University of Queensland, Brisbane, Queensland, AUS

May 2005 – Aug 2005

\$45m State-of-the-Art Institutional Building Multi-storied Neuroscience Research Facility incorporating 2 underground levels for testing, 4 levels of labs & 1 top level for auditorium & admin Total GFA 12,000m²

Second-In-Charge & CAD Co-ordinator:

- Production & completion of DD drawings
- In charge of the drawing set
- Consultant co-ordination
- Close co-ordination with local architects Wilson to manage drawings, lab layouts, interiors & expert advice on planning
- CAD administrator



John Wardle Architects

“Jane Foss-Russell Building”, University of Sydney Central Building, Sydney, New South Wales, AUS

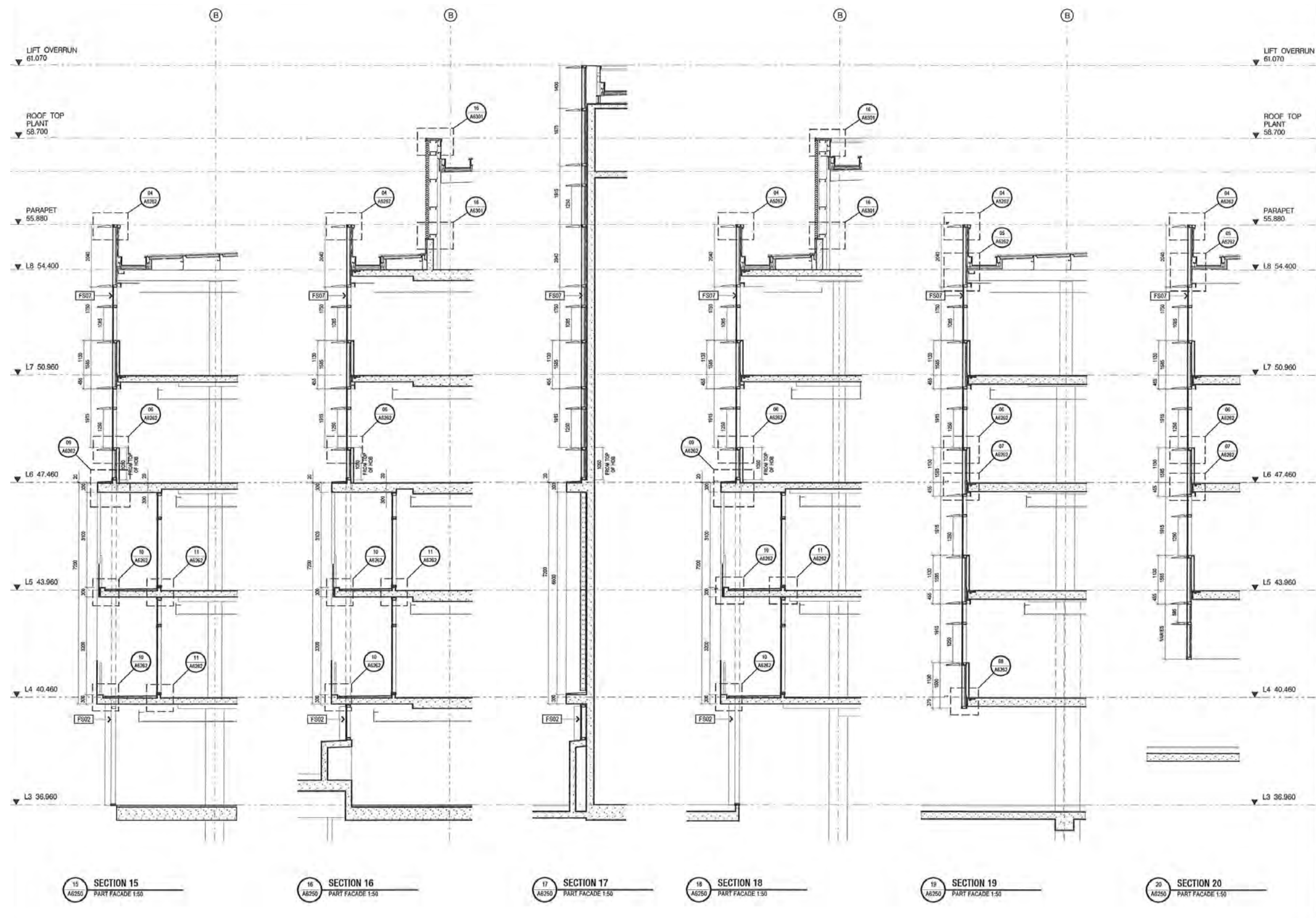
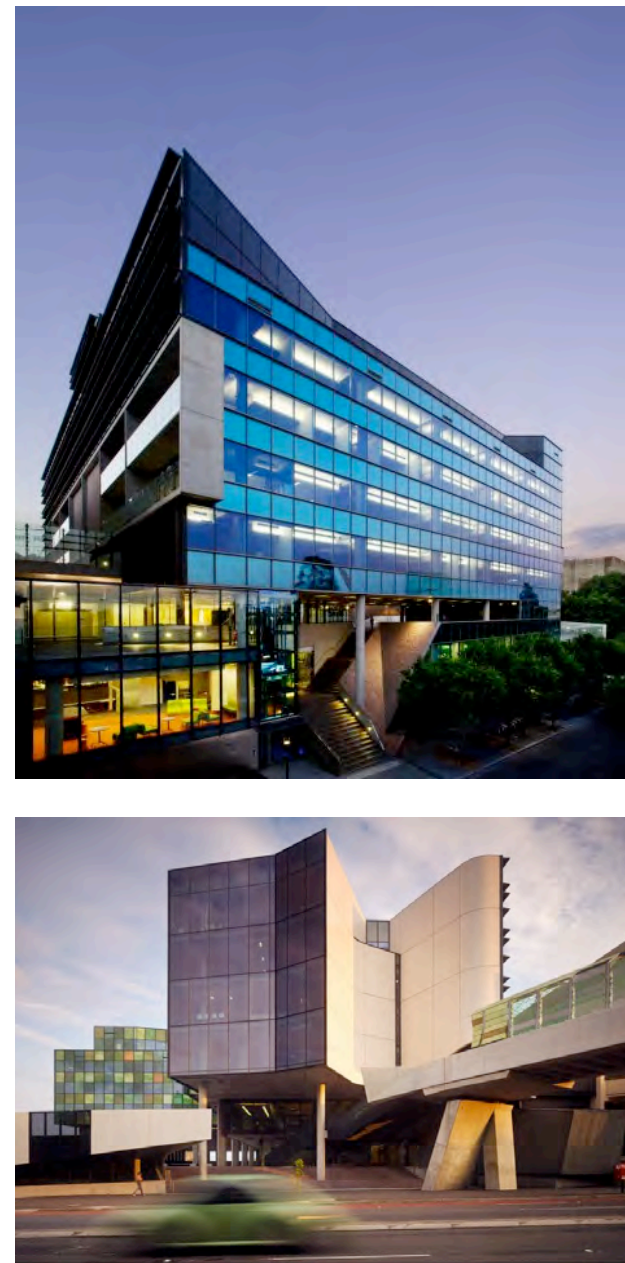
\$50m Educational/Institutional Building

Multi-storied Campus Union Services Building incorporating below ground library, a central plaza and 6 levels of student services & staff offices

Feb 2005 – Apr 2005

Total GFA 3,000m²

- Façade Co-ordinator:
- Research, development & documentation of all façade systems
 - Study of frit pattern & colours for elevations facing public plaza
 - Specialist consultant co-ordination
 - Production & co-ordination of Façade Tender Documentation drawings



LAB Architecture Studio

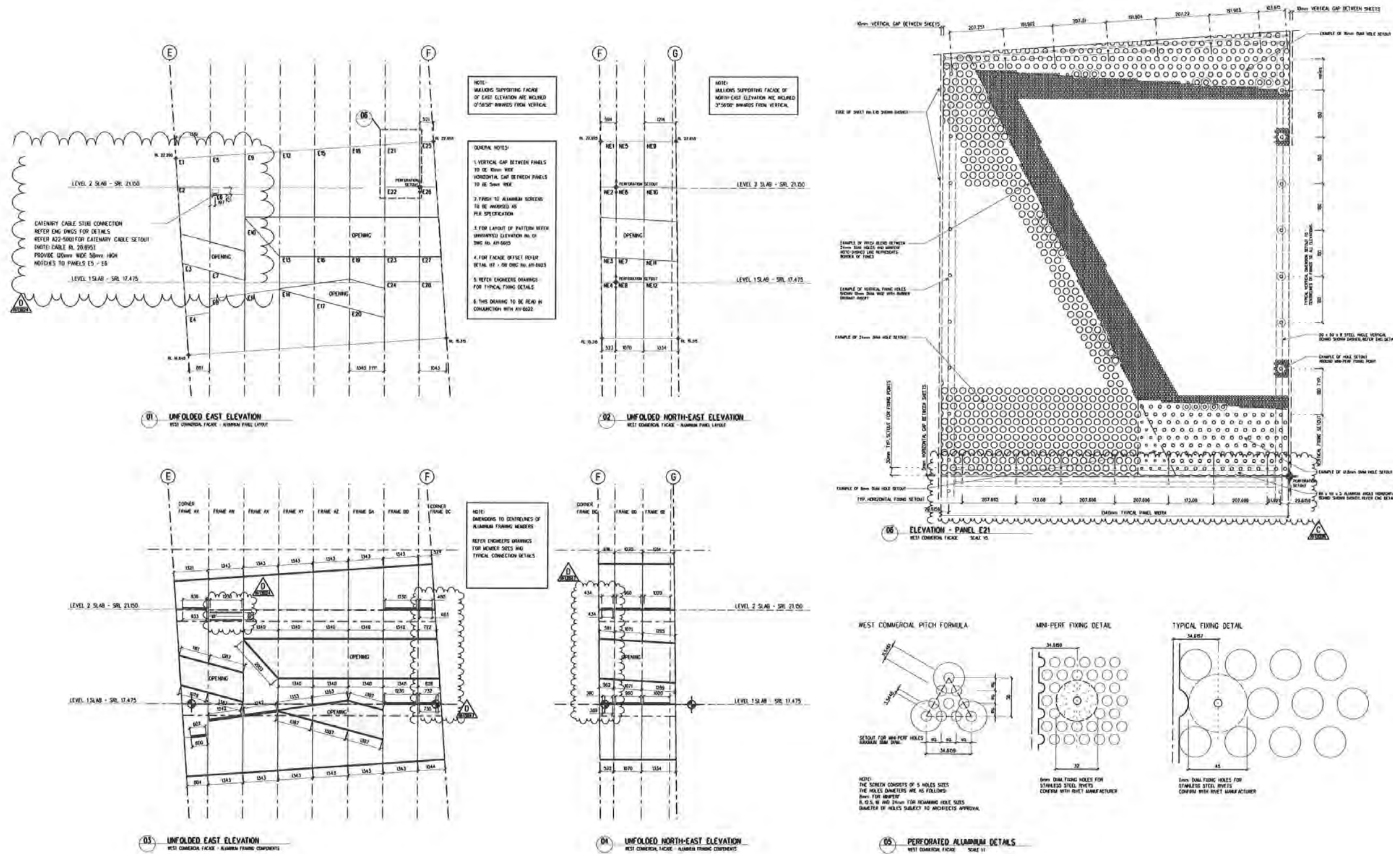
“Transport Building” at “Federation Square”, Corner Flinders & Swanston Sts, Melbourne, Victoria, AUS

Mar 2001 – Nov 2002

Commercial Building (West)

3 levels of core & shell commercial retail space & annex located in a civic development, ground floor housing a pub, 2nd floor a restaurant, 3rd floor a cocktail lounge bar

- Façade Co-ordinator:**
- Design of pattern of perforated aluminium façade
 - Attended client meetings & façade presentations
 - Worked closely with project architect to develop programming, schedules & documentation of façade components through DD, CD & CA phases
 - In charge and produced all of the façade drawing documentation for construction, including perforation specifications & detailing
 - Initiated a close working relationship with façade subcontractors for the tender, prefabrication, construction and defect periods
 - Visited factory to review perf panels
 - Attended site meetings during CA phase, working closely with the managing contractor Multiplex to ensure program was met



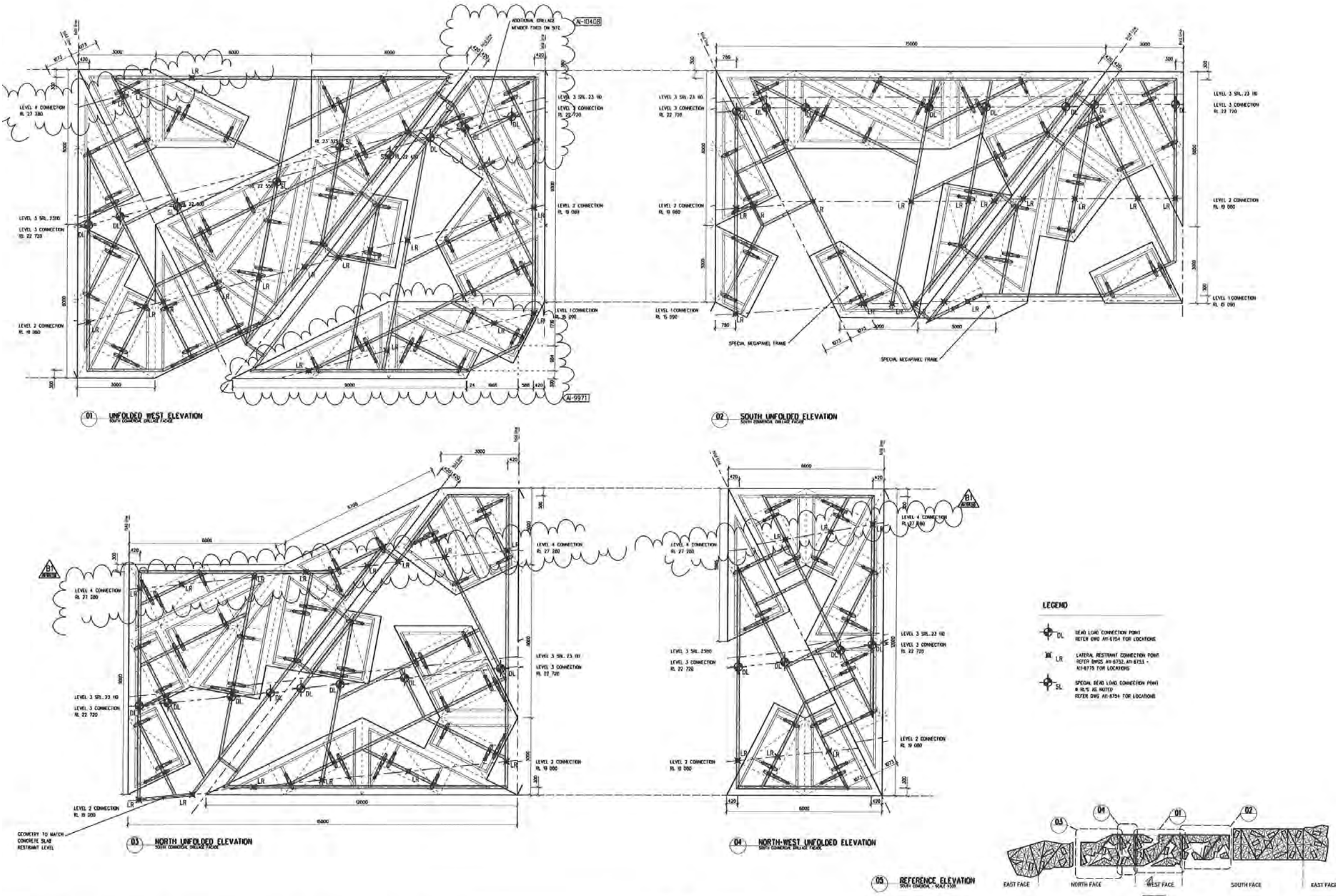
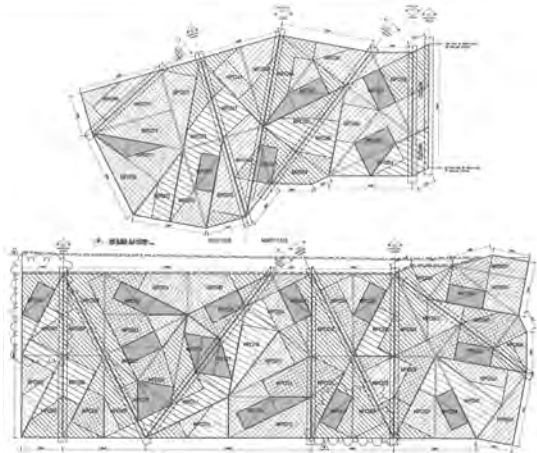
LAB Architecture Studio “Yarra Building” at “Federation Square”, Corner Flinders & Swanston Sts, Melbourne, Victoria, AUS

Commercial Building (South) 4 levels of core & shell commercial office space located in a civic development

Mar 2001 – Nov 2002

Façade Co-ordinator:

- Worked closely with project architect to develop programming, schedules & documentation of façade components through DD, CD & CA phases
- In charge & produced all of the façade drawing documentation using 3D CAD models to generate all 2D drawings
- Developed a close working relationship with façade contractor Permasteelisa for the tender, prefabrication, construction and defect periods
- Developed Strategy for cladding the interiors of the three-dimensional folding façade elements



Elenberg Fraser “Liberty Tower” Corner Collins & Spencer Sts, Melbourne, Victoria, AUS

\$50m Residential Tower Interiors 28 levels Multi-storied High-rise Residential Tower with above ground carparking levels, and retail tenancy to Ground level

Nov 2000 – Mar 2001

Total GFA 42,000m²

Interiors Documentation Team Leader:

- Co-ordinated, created & prepared Apartment Interiors Drawing Tender Package under the supervision of PA
- Worked closely with in-house Interior Designer on Materials, Details Layouts
- Liaised with DesignInc: Architect of Record for the building shell.



LAB Architecture Studio “The Atrium” at “Federation Square”, Corner Flinders & Swanston Sts, Melbourne, Victoria, AUS

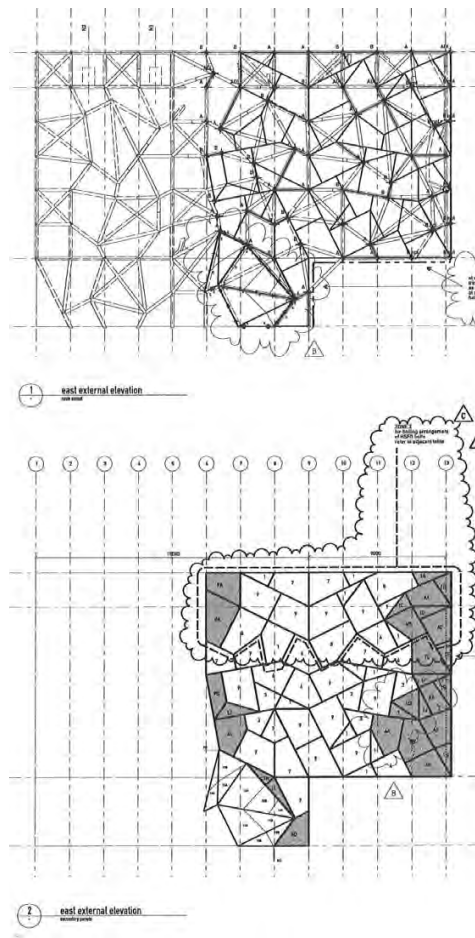
Apr 1999 – Oct 2000

\$20m Atrium Space (North) Public Space located in a major civic development, functions as exhibition space, foyer to NGV Australia, and houses specialty shops & cafes

Total GFA 1,680m²

Graduate Architect:

- Documented the double-skinned façade, roof, ceiling and structure of the atrium
- Worked closely with in-house façade & structural engineer Atelier 1, in both 3D and 2D CD and Tender documentation split into Trades
- Travelled to the shop-drawers and worked in-house with them to recreate highly accurate steel structure in 3D, used to generate all steel & glass shop drawings
- Involved in reviewing shop drawings
- Attended consultant & contractor co-ordination & site meetings



LAB Architecture Studio “Deakin Edge” at “Federation Square”, Corner Flinders & Swanston Sts, Melbourne, Victoria, AUS

Apr 1999 – Oct 2000

\$15m Atrium Space (South) Public Amphitheatre located in a major civic development, functions as a multi-purpose performance space for ticketed or public lectures, chamber music, dance & theatre Total GFA 840m²

Graduate Architect:

- Documented the double-skinned façade, roof, ceiling and structure of the atrium working closely with project architect/designer, in-house façade & structural engineer Atelier 1, in both 3D and 2D for CD and Tender documentation phases, splitting drawings into Trade Packages for fast-tracking purposes
- Travelled to the shop-drawers and worked in-house with them to recreate highly accurate steel structure in 3D, used to generate all steel & glass shop drawings
- Involved in reviewing shop-drawings. Attended consultant & contractor co-ordination & site meetings
- Worked with acoustic engineer to help locate acoustic panels to the walls & ceiling
- Studied layout of interior timber seating, walkways & stage

